

NEW



Oil & Grease



Call 01432 373350

Email info@htsspares.com

Web www.htsspares.com

HTS Spares - Specialists in Oil and Grease

Here at HTS Spares we have been distributing oils and greases for off-highway applications for 30 years. Over those years we have sold oil and grease products from many top brands including Silkolene, Gulf, Shell and Castrol.

In 2017 we became a main distributor for Morris Lubricants. Partnering with such a strong brand, with a global reputation for the highest quality products, gives us the ability to offer you peace of mind every time.

Our fully comprehensive range, along with our high levels of personal customer care, ensures we continue to work hard to be your supplier of choice.

Contents

- Page 1 NLGI
Grease Consistency Chart
Meet our product specialists
- Page 2 Grease
- Page 3 Grease, Guns, Pumps & Accessories
- Page 4 Screw-in Grease Cartridge System
- Page 5 Lube-shuttle® System

National Lubricating Grease Institute (NLGI)

Greases are measured by NLGI consistency

The NLGI consistency number expresses a measure of the relative hardness of a grease used for lubrication, as specified by the standard classification of lubricating grease established by the National Lubricating Grease Institute (NLGI).

NLGI	Appearance	Consistency Food Analog
000	Fluid	Cooking Oil
00	Semi-Fluid	Apple Sauce
0	Very Soft	Brown Mustard
1	Soft	Tomato Paste
2	“Normal Grease”	Peanut Butter
3	Firm	Vegetable Shortening
4	Very Firm	Frozen Yoghurt
5	Hard	Smooth Pate
6	Very Hard	Cheddar Cheese

Meet our oil and grease specialists...



Matt Seldon
matt.seldon@htsspares.com



Tony Lewis
tony.lewis@htsspares.com

Grease

Our range of high performance greases are suitable for a wide range of agricultural, construction and industrial applications, including wheel bearings, CV joints, pins, bushes, hydraulics and mechanical components.



Copper Grease 70g HRM0029

Long lasting, high temperature copper lubricant with outstanding anti-seize properties. Thick, protective lubricant for metal parts. Eliminates corrosion, seizure & brake squeal. Will not wash off.



Copper Grease 500g HRM0052

Morris K383 Anti-Seize Compound Copper grease is a lead free anti seize compound, made from high quality mineral oils, bentonite (clay) thickener and fine copper powder. Ideal for lubricating brake linkages.



CV Joint Grease 500g HRM0697

For modern constant velocity joints on trucks, vans & cars. Additives adhere to metal surfaces under pressure to provide a lubricant film.



K400EP Semi Fluid Grease 12.5kg HLU0782

Semi fluid grease for centralised lubrication systems. For bearings subjected to high load conditions & gearboxes. NLGI 00.



K40EP Semi Fluid Grease 12.5kg HLU0862

Semi fluid, soft Lithium based grease. For gears, plain and anti-friction bearings where an NLGI 0 is specified.



K323 Premium Blue Grease 400g HLU0825

Extremely sophisticated lithium / calcium base grease which incorporates polymer technology. NLGI 2.5.



K42 EP2 Brown Grease

This Lithium Brown Grease is highly recommended for all automotive use where a multipurpose grease is required. NLGI 2.

Size	Code
400g	HLU0800
12.5kg	HLU0775
50kg	HLU0774



Morris K2EP Longlife Red Grease

Lithium Complex Red Grease is a High Pressure grease ensuring effective lubrication is achieved even under the most severe conditions. NLGI 2.

Size	Code
400g	HLU0799
12.5kg	HLU0779
50kg	HLU0778



**Mobile Air Greaser 12.5Kg - 18Kg
HOL0015**

Mobile air greaser 12.5 kg - 18 kg
50:1 ratio air operated grease pump
4 wheeled trolley
4m of 1/4" bore delivery hose
Grease gun complete with straight swivel
280mm diameter drum cover
265mm diameter follower plate
For 18kg kegs, change the drum cover and plate



**Mobile Air Greaser 50kg
HOL0016**

Mobile air greaser 50kg
50:1 ratio air operated grease pump
4 wheeled trolley
4m of 1/4" bore delivery hose
Grease gun complete with straight swivel
385mm diameter drum cover
370mm diameter follower plate
Takes 50kg grease keg



**Grease Bucket Pump
HOL0025**

Direct high pressure lubricating system. 12.5kg pump comes complete with 1.5mtr flexi hose and follower plate.



Mobile Greaser Follower Plates

Follower pressure plates for mobile air greasers

Dia (mm)	Suits (kg)	Code
230-260	12.5-18	HOL0116
330-370	50	HOL0117



**Grease Control Valve
HOL0135**

Grease control valve steel and aluminium control valve with ergonomic design. To be used with high pressure systems (max 500 bar).

HTS stock a wide range of grease equipment.

The full range and pricing can be found on our website:

www.htsspars.com



Screw-in System

The Screw-in Grease System (sometimes known as the 'Reiner System') makes maintenance simple. The system consists of a threaded 500g grease cartridge which helps to minimise wastage and time when changing cartridges. The Screw-in Grease System offers you a flexible and versatile system for safe and clean lubrication of your machinery.



Exol Mp2 - Screw Type HLU0200

An adhesive lithium soap based multi-purpose grease. Heavy-duty, adhesive, aging & water resistant. Outstanding corrosion protection & low temperature characteristics. Smooth & work-stable.



Exol Duraplex - Screw Type HLU0240

A premium quality, multi-purpose long life grease, manufactured from lithium soaps and extreme pressure additives. It provides both high temperature performance and extreme pressure properties.



Exol Moly - Screw Type HLU0202

A premium lithium soap grease containing the solid lubricant molybdenum disulphide. Manufactured from lithium soaps and extreme pressure additives and 1% molybdenum disulphide.

Screw in Grease Gun

- Produces up to 5800psi / 400bar of pressure for easy lubrication of long grease lines.
- Ergonomic handles for optimum operation.
- Cap to prevent contamination of the hose end.
- Works using a special vacuum principle to ensure each cartridge is completely emptied.
- Utilises unique screw fit cartridges which can be removed, resealed and exchanges simply, efficiently and cleanly.



Reiner Grease Gun Genuine HOL0041

The genuine grease gun from Reiner. Produces 5800psi/400bar of pressure for improved & easier lubrication. Dual handle operation, reduces manual force to pump grease. Uses screw type cartridges which can be easily removed & resealed. Efficient & clean exchange reduces wastage.

Suits
Reiner
type



Reiner Grease Gun Twin Handle HOL0186

Easy to use 'Reiner Type' grease gun for quick cartridge changes. 5800psi/400bar of pressure for improved & easier lubrication. Dual handle operation, reduces manual force to pump grease. Uses screw type cartridges which can be easily removed & resealed. Efficient & clean exchange reduces wastage.

Suits
Reiner
type

Lube-Shuttle System

The Lube-Shuttle® Grease Gun System for all greasing applications is designed and manufactured in Mühlheim, Germany by the worldwide 'MATO' company who lead the way in the maintenance of conveyor belts and in the handling of lubricants and fuels. All MATO products are manufactured in accordance with DIN EN ISO 9001.



**Morris EP2 Lube Shuttle 400g
HLU0803**

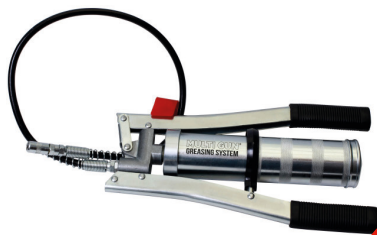
Lithium grease for automotive use where multi-purpose grease is required for wheel bearings or chassis lubrication. Also great for lubricating construction and mining equipment where greased components are subjected to continuous heavy or shock loads.



**Lube-Shuttle® Grease Gun Pistol Grip
HOL0199**

The Lube-Shuttle® Grease Gun System for all greasing applications is designed and manufactured in Germany, giving the user unrivalled quality and build. Comes with an adaptor to enable the gun to be used with both Lube-Shuttle® and Reiner grease cartridges.

Suits
Lube-Shuttle



**Multi Grease Gun Twin Handled
HOL0126**

A twin handled multi grease gun for 500g and 400g threaded cartridges, including Reiner & Lube-Shuttle® cartridges. Can also use with standard DIN1284 tubes.

Suits
Lube-Shuttle
& Reiner
type



**Multi Grease Gun Side Lever
HOL0125**

For 400g Lube-Shuttle® type cartridges. Comes with 12" Nylon Hose and 4 JAW coupler. Features a Hose Park to avoid contamination. Adapter for Lube Shuttle.

Suits
Lube-Shuttle
& Reiner
type

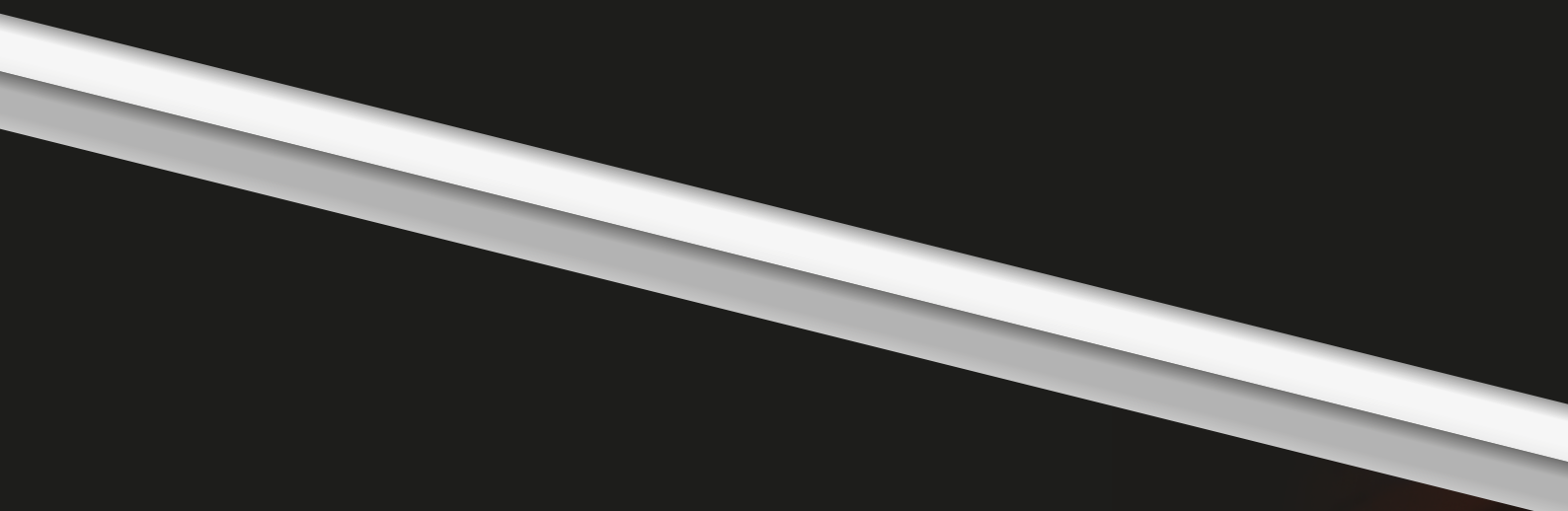
Reiner vs Lube-shuttle? What's the difference?

500g Reiner looks like this



400g Lube-Shuttle looks like this





Call 01432 373350

Email info@htsspares.com

Web www.htsspares.com